

# Zincalume®

Made Only By BlueScope Steel

LET US BE PART OF YOUR LIFE

# MANUFACTURING SOLUTIONS



**BLUESCOPE  
STEEL**

# EXCELLENCE IN FABRICATION



## Excellent Formability

ZINCALUME® steel is suitable for most forming operations and can be readily bent, roll-formed or drawn without sacrificing coating adhesion.



## Bending

Laboratory tests confirm excellent adherence of the zinc and aluminium coating to the steel substrate during bending, folding and brake pressing that are done commercially as with conventional Galvanised steel (G.I.).

## Corrosion Resistant

The coating on ZINCALUME® steel comprising 55% aluminium, 43.5% zinc and 1.5% silicon, provides excellent corrosion resistance. Based on numerous accelerated tests and outdoor tests continually carried out by BlueScope Steel Research, Australia and SIRIM (Malaysia), ZINCALUME® steel outlasts Galvanised steel (G.I.) significantly.



## Forming

The clear resin film on the surface of ZINCALUME® steel acts as a lubricant during forming operations. Additional lubricant is usually not needed. The resin coating also reduces wear and tear on rolls and dies, and reduces risk of marks on the roll surface during the process.

## Paintability



Lab tests and actual cases at project sites have proven that the surface of ZINCALUME® steel can be readily painted with gloss paint without the need for a primer, saving you time and money.

## Welding

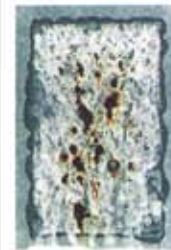
ZINCALUME® steel is suitable for resistance spot-welding using machine adjustments similar to those used for Galvanised steel (G.I.).

## Lock Seaming

ZINCALUME® steel is easily lock seamed for your convenience.

## Higher Yield Advantage

The coating on ZINCALUME® steel is made up of 55% aluminium by weight but 80% by volume. This means that the coating weighs less, giving you a higher yield advantage compared to Galvanised steel (G.I.).



Galvanised steel (G.I.)  
(240 hours)



ZINCALUME® steel  
(240 hours)

## Salt Spray Testing

Laboratory salt spray testing were conducted in accordance to the ASTM test method B117 and AS1580. Results show that ZINCALUME® steel performs better compared to Galvanised steel (G.I.) after 240 hours of salt spray testing.

## Applications

The excellent performance of ZINCALUME® steel allows it to be used in a variety of everyday applications such as:

- Electrical Appliances  
(TV shrinkage band, computer casing)
- Home appliances  
(Food warmer, air-conditioner base pan)
- Automotive parts  
(Heat shield, muffler)
- Other applications  
(Air handling unit, ducting, shutters, steel door, ceiling strips, steel storage, clean room)

# Zincalume®



TERMITE  
PROOF



THERMAL  
EFFICIENCY



DESIGN  
FLEXIBILITY



DURABILITY/  
SECURITY



RECYCLING



COATING

BlueScope Steel (Malaysia) Sdn Bhd (223136-P)

Lot 1551, Jalan Bukit Kapar, 42200 Kapar, Selangor Darul Ehsan, Malaysia. Tel: 603-3250 8333 Fax: 603-3250 8942 Website: [www.bluescopesteel.com.my](http://www.bluescopesteel.com.my)